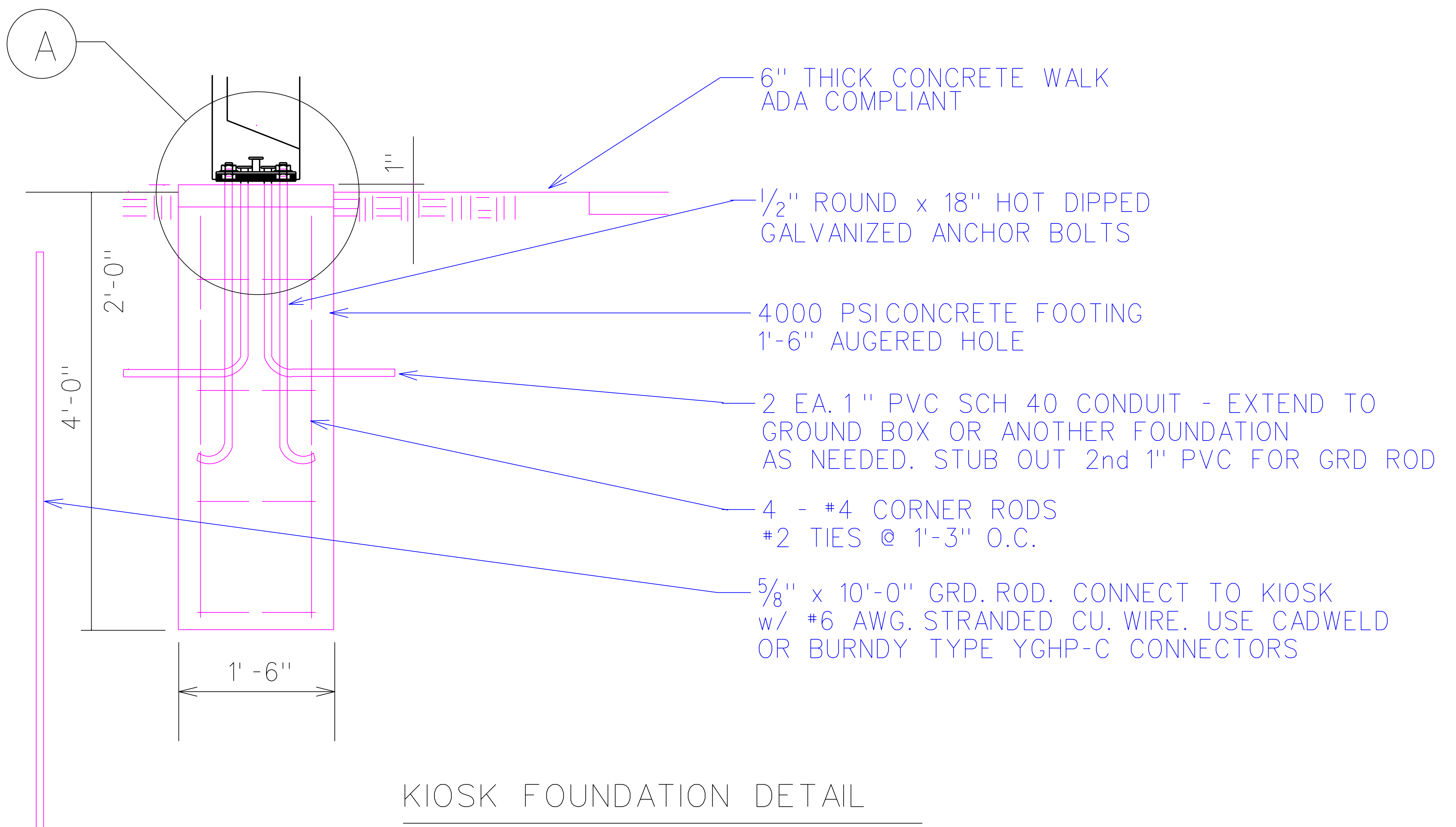
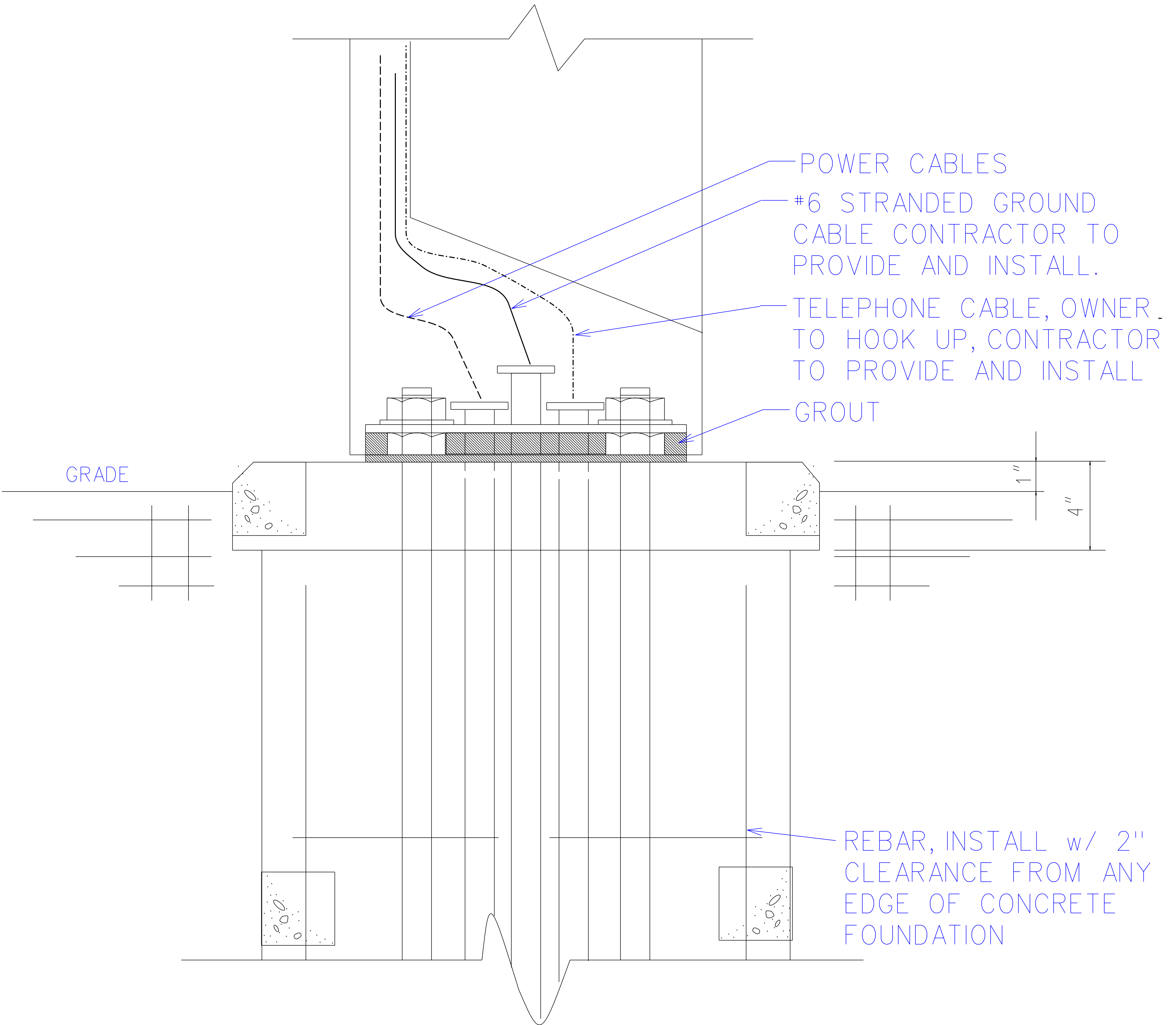


KIOSK BASE DETAIL



KIOSK FOUNDATION DETAIL

STANDARD KIOSK DETAIL



# DETAIL A

DATE: 2/17/02  
SHEET 2 OF 3

CAST ALUMINUM BASE  
PAINTED TO MATCH  
BRONZE 40 DURANODIC

(3) 1/2" OR 5/8" X 15" RD HOT DIPPED  
GALV. ANCHOR BOLTS FURNISHED  
AND INSTALLED BY THIS CONTRACT  
1" TO 1 1/4" ANCHOR BOLT PROJECTION  
MAX ABOVE FINISHED FLOOR

6" CONCRETE  
ADA WALK  
(NO REINF.).

CENTERLINE  
OF KIOSK

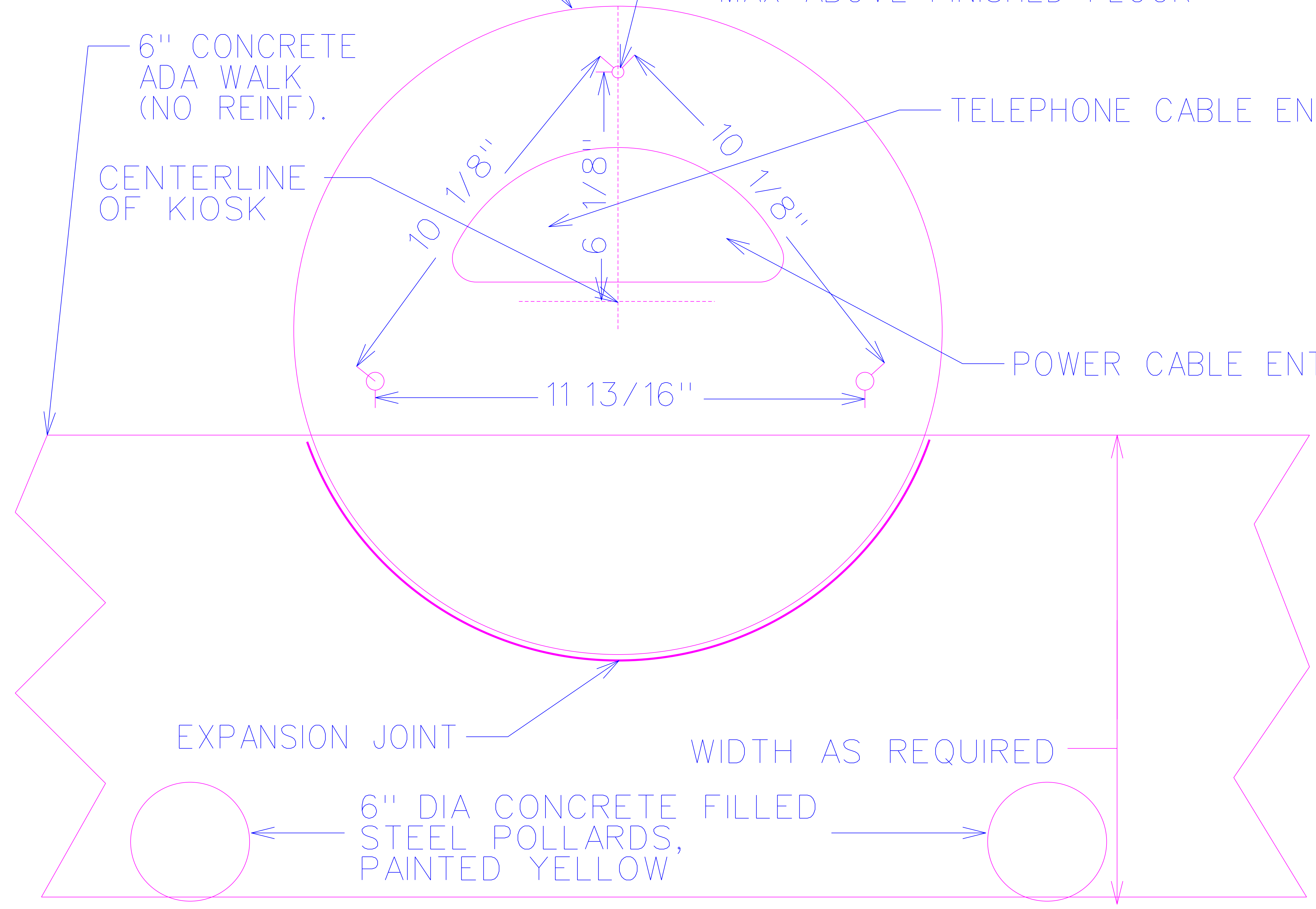
TELEPHONE CABLE ENTRY

POWER CABLE ENTRY

EXPANSION JOINT

WIDTH AS REQUIRED

6" DIA CONCRETE FILLED  
STEEL POLLARDS,  
PAINTED YELLOW



# STANDARD WALK / KIOSK FOUNDATION DETAIL

DATE: 8/26/04  
SHEET 3 OF 3